



# Installation Manual

Please read the instructions  
carefully before installing.

---

[Badeloftusa.com](http://Badeloftusa.com)



## Safety Notes:

Safety gloves should be worn during installation to prevent injuries.

## Installation & care:

- Follow all applicable plumbing and building codes.
- Before installation, check the product for any shipping or surface damage. After it's installed, we can't accept damage claims.
- Before installation, make sure the wall opening is prepared. Do not use a load-bearing wall. The rough opening and the overall product size typically differ by .59 in (15 mm) in width and height. Treat these as reference values—measure your actual product and mark/cut accordingly.
- During installation, clean the niche and the wall opening. Apply a continuous bead of neutral-cure silicone ("glass glue") to the back of the niche's front edge/flange where it meets the wall, then press the niche into the opening until it seats flush.
- The niche frame can be covered by wall tiles.
- Avoid cleaners containing chlorine, acids, or bleach (e.g., cement residue removers, silver polish), as they can corrode the surface. If tile or grout cleaner is used nearby, rinse the niche thoroughly with clean water afterward. Do not use abrasive cleaners, scouring pads, steel wool, or sharp/pointed tools.
- Clean brushed or ground finishes in the direction of the grain, not across it.
- Do not leave items with bare steel or aluminum bottoms in long-term contact with the stainless-steel surface.



## Cleaning and maintenance:

- **Use non-abrasive materials when cleaning stainless steel.**

### We recommend:

1. A soft microfiber cloth or chamois cloth
2. A sponge (Caution! No scouring pads or steel wool)
3. A stainless-steel cleaner or other mild, suitable cleaner

If you have any questions about cleaning, please contact our team.

## Important:

**Do not use silicone that contains acetic acid (acetoxy-cure). Use neutral-cure silicone only.**

## Description:

### Product Features:

#### Material:

Stainless Steel 304

#### Colors:

PVD Brushed Gold,  
PVD Brushed Rose  
Gold, PVD Brushed  
Gunmetal, Brushed  
Steel, Matte Black,  
Matte White

#### Wall Type:

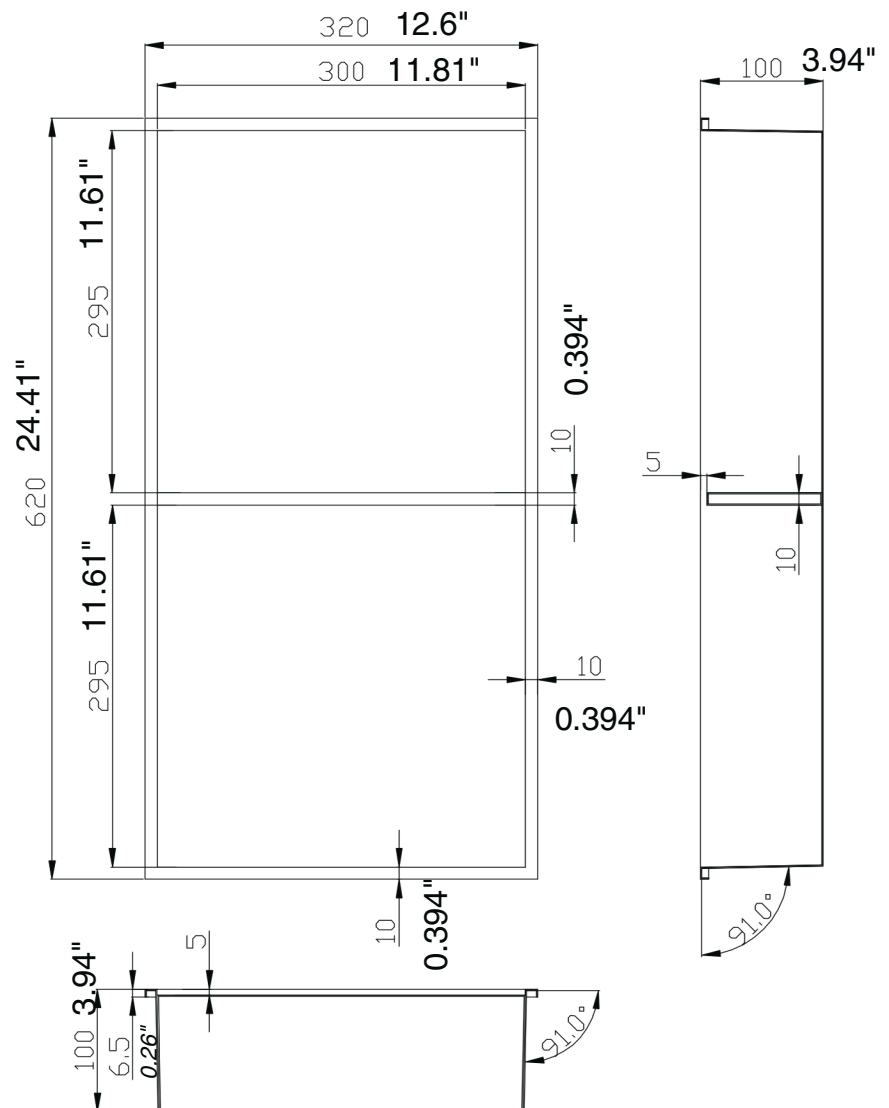
Solid wall  
construction

Suitable for use in  
bathrooms and living  
spaces

Ideal for renovations  
or new construction

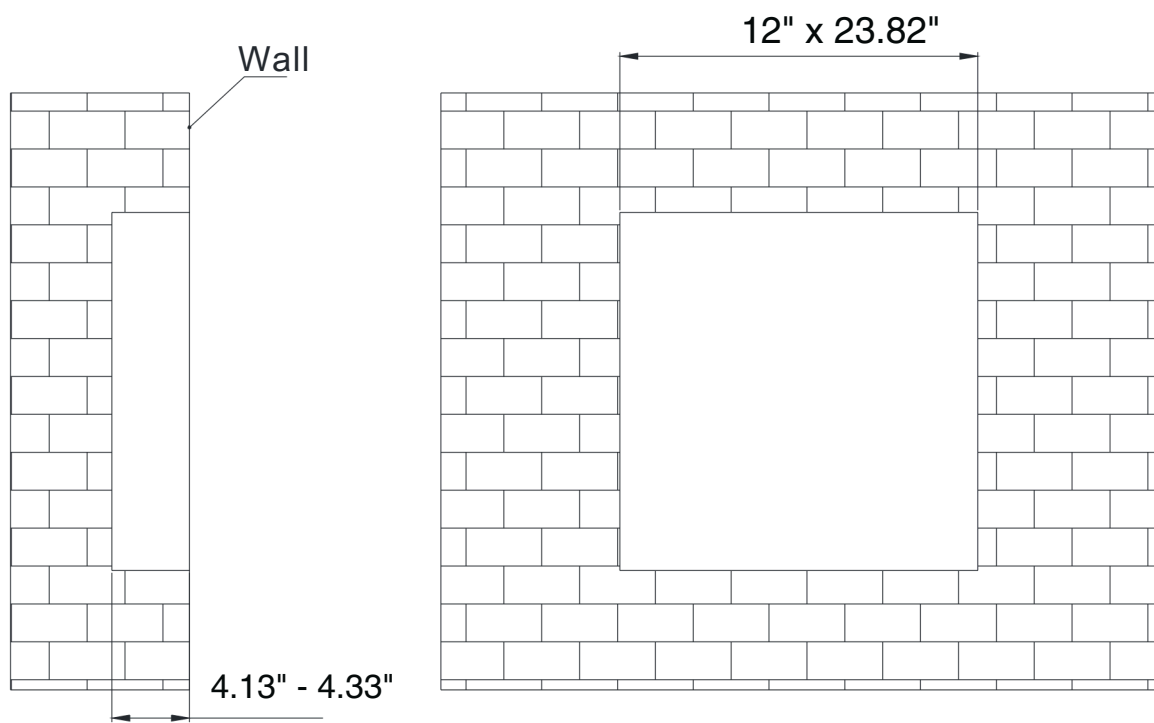
Easy to clean

## Installation Dimensions:



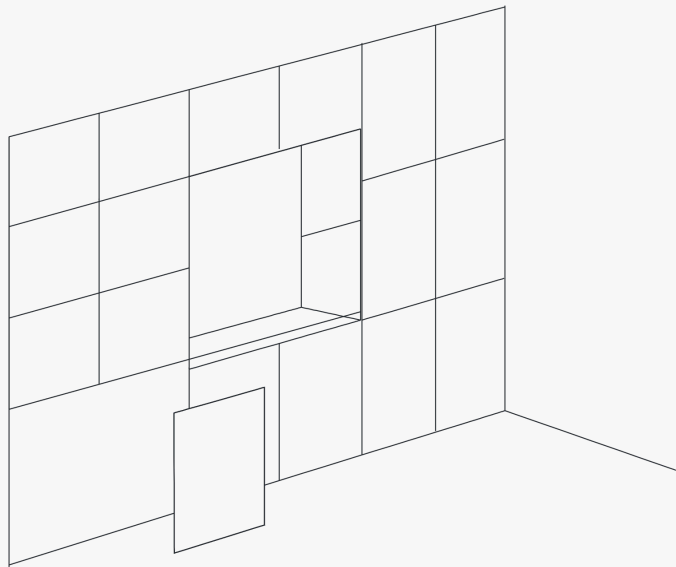
## Step 1:

Cut the wall opening per the technical drawing. Leave an extra 0.197" (5 mm) of clearance in length and width.



## Step 2:

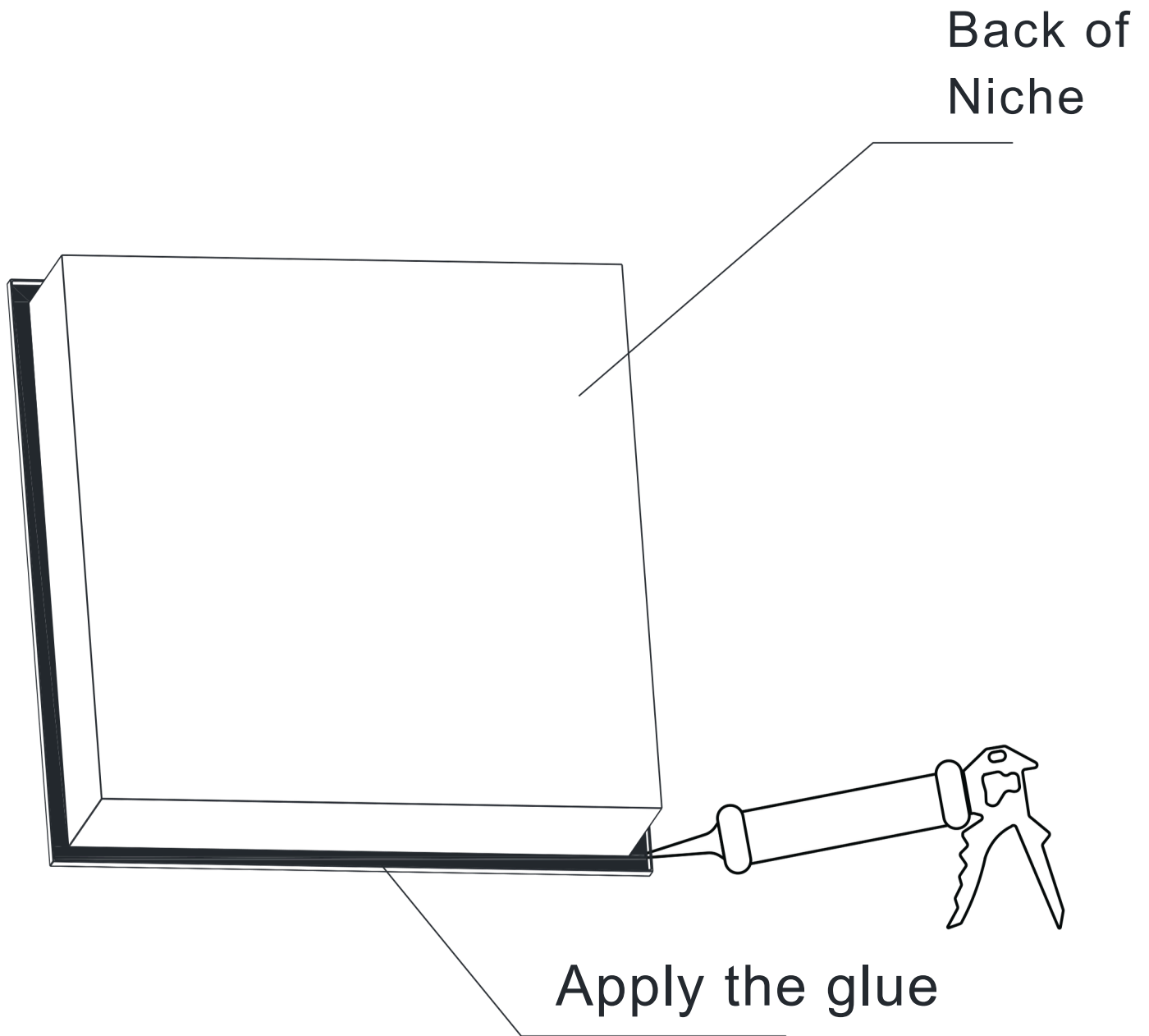
Clean the niche and the wall opening.





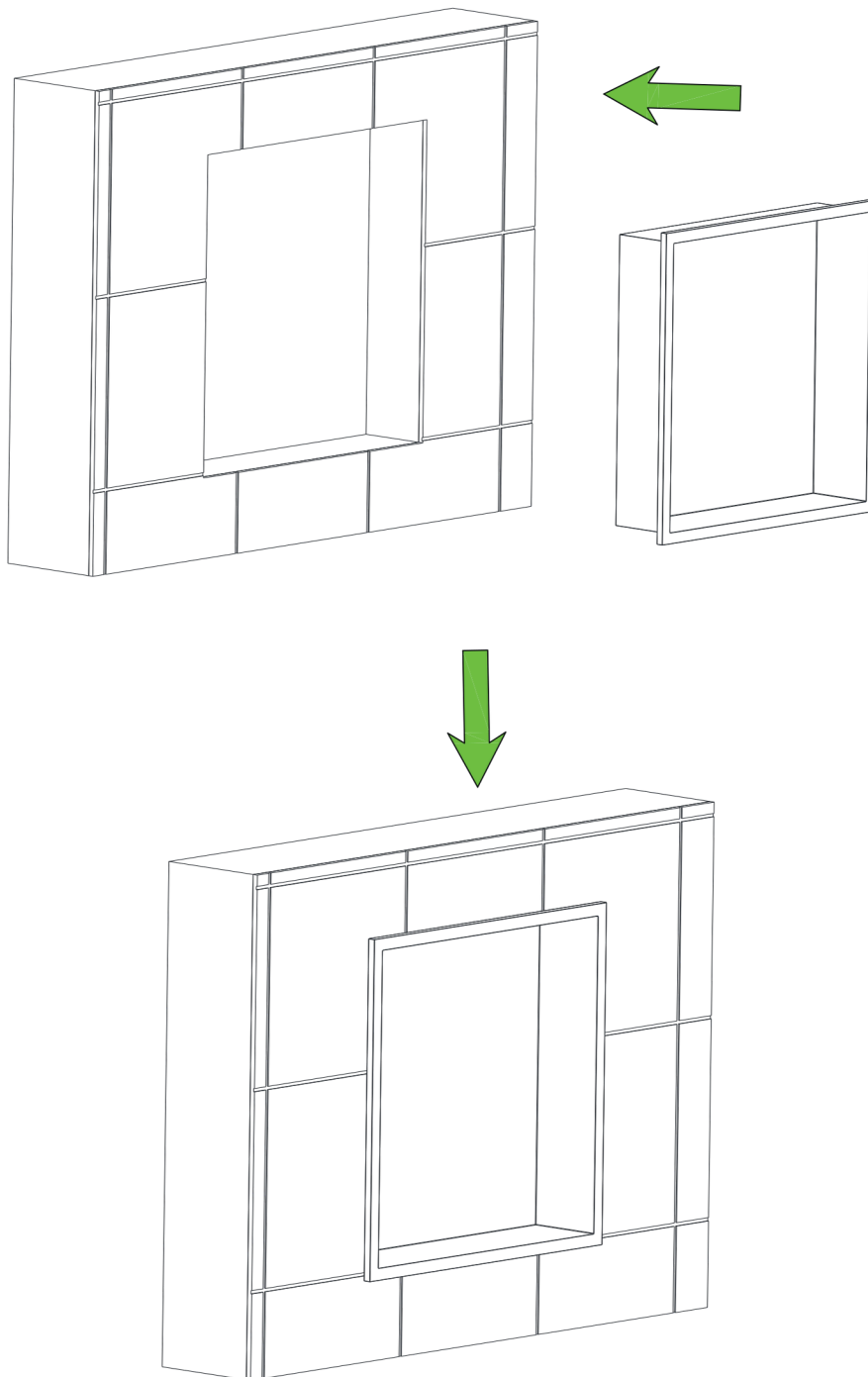
## Step 3:

Apply a continuous bead of neutral-cure silicone to the back edges/flange of the niche.



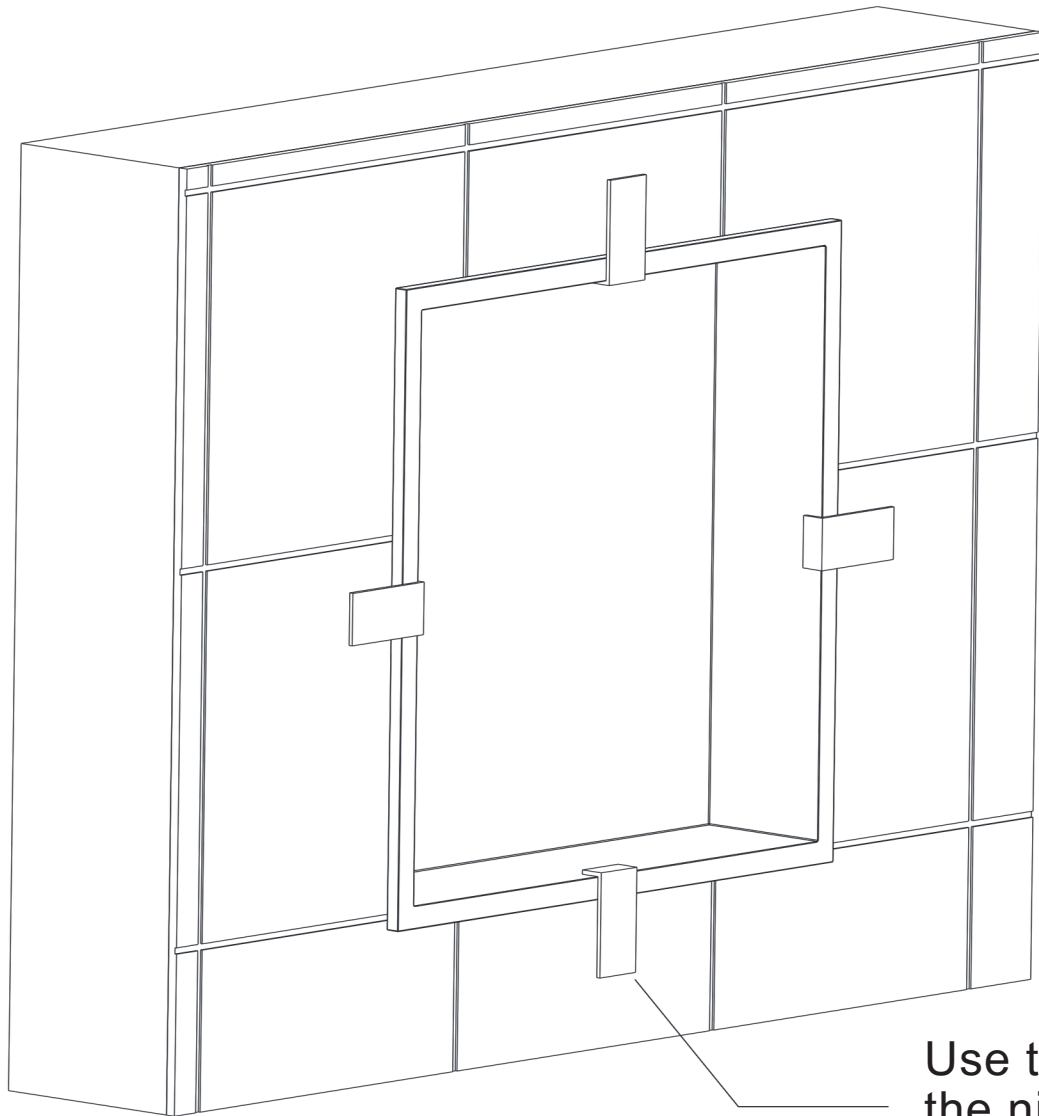
## Step 4:

Insert the niche into the wall recess and press it in until it sits flush.



## Step 5:

Use painter's tape to hold the niche in place while the silicone cures (about 24 hours). Remove the tape after curing.



Use tape to hold the niche in place while the the silicone cures

## Step 6:

Tile the wall so the tile overlaps the niche frame. Installation complete.

